

CHS NONNA Frequently Asked Questions

1. To which Horizontal and Vertical Datum are CHS NONNA products referenced?

All CHS NONNA data sources are horizontally referenced to the unprojected World Geodetic System 1984 (WGS84).

Data can be loaded using the ESPG: 4326, the WGS84 coordinate reference system.

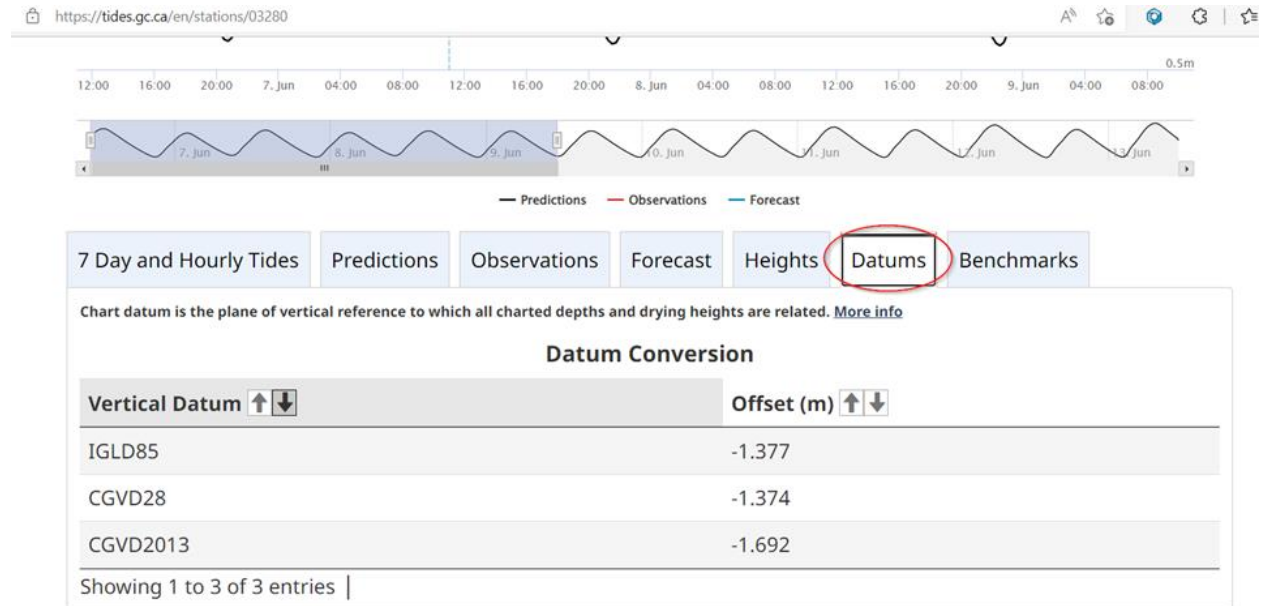
All CHS NONNA data sources are referred to Chart Datum (CD) which is the plane of vertical reference to which all charted depths and drying heights are related.

The link below specifically deals with datums as released on Chart Products, however this can be a good reference when learning about Chart Datum in general on Canada's Tidal and In-land waters.

<https://tides.gc.ca/en/vertical-datum-chart-references>

2. How can I vertically shift data from CD to other vertical references?

Local shift values can be found on CHS Tides and Water Levels Website [Stations \(tides.gc.ca\)](https://tides.gc.ca). See Datum Tab below.



NOTE: The information contained in this product is established under the Chart Datum. The CHS does not establish and maintain other vertical datums such as CGVD28, CGVD2013, IGLD (1955) and IGLD (1985). References to these datums represent the best available information, to be used with caution and sound judgment where required, but it is not intended to be used for navigation.

Hydrographic Vertical Separation Surface (HyVSEPs) allowing shifting CHS NONNA data over other vertical references (such as NAD83SCRS2010, CGVD28, CGVD2013, IGLD85) may exist. Please contact

'chsinfo@dfo-mpo.gc.ca' to ask for any existing HyVSEPs. CHS is working on solutions to have HyVSEPs products available in the future through our web services.

3. Why are there voids in the CHS NONNA data where there was data previously?

Due to the large volume of questions received regarding the data's datum, the CHS has prioritized the use of Chart Datum (CD) datum. Data that does not have this datum was removed and will be added as the data is updated to CD. Additionally, there are some data sources that were previously available that are now undergoing further work. These data sources will not be available until such work is complete in the CHS' Bathymetric Database.

4. What is the projection for the CHS NONNA data?

The NONNA data is unprojected, but uses the WGS84 horizontal reference system. Longitudes and Latitudes from the NONNA data set can be further projected to your preference.

All Data formats can be loaded using the EPSG:4326, WGS84 Geographic Coordinate Reference System.

5. What is the XYZ format description?

The XYZ is a .txt file containing:

- X = Latitude
- Y= Longitude
- Z= Depth (positive down in Metres)

6. Where can I find which sources contributed to the CHS NONNA layer? (metadata, dates, technique of data collection etc.)

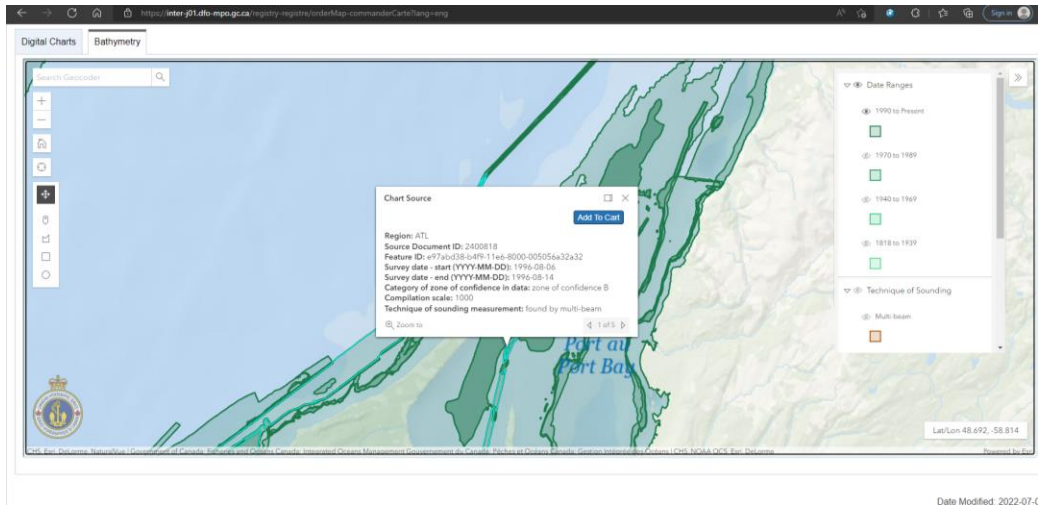
The metadata of the various sources that were used to generate the CHS NONNA products is available in *.csar files only. See the "NONNA Data Portal Guidance Document" PDF for a further description of these categories.

Feature ID|SorID|CATZOC|TECSOU|SURSTA|SUREND

Contributor =

A	B	C	D	E	F
---	---	---	---	---	---

For more information about contributing sources from the CHS bathymetric database, visit the website [CHS Digital Data Portal / Service portail de données numériques du SHC \(dfo-mpo.gc.ca\)](https://chsdigitaldataportal.ca/)(pictured below). Under the bathymetry tab, zoom to your area; here individual datasets can be selected to see their source information. You can also apply to obtain the data and license by adding it to your cart and following through with the application process.



7. How Can I use the “Open Government Portal” Link: [Open Government | Open Government, Government of Canada](#) to view the NONNA data available?

1. Search for NONNA;
2. A new page will open with the **Canadian Hydrographic Service Non-Navigational (NONNA) Bathymetric Data** listed;
3. Click on **View on Map**;
4. Zoom into area to see datasets; here data is not selectable or downloadable you must go to <https://data.chs-shc.ca/login> to download data

8. How can I view CHS NONNA products as a layer in GIS applications:

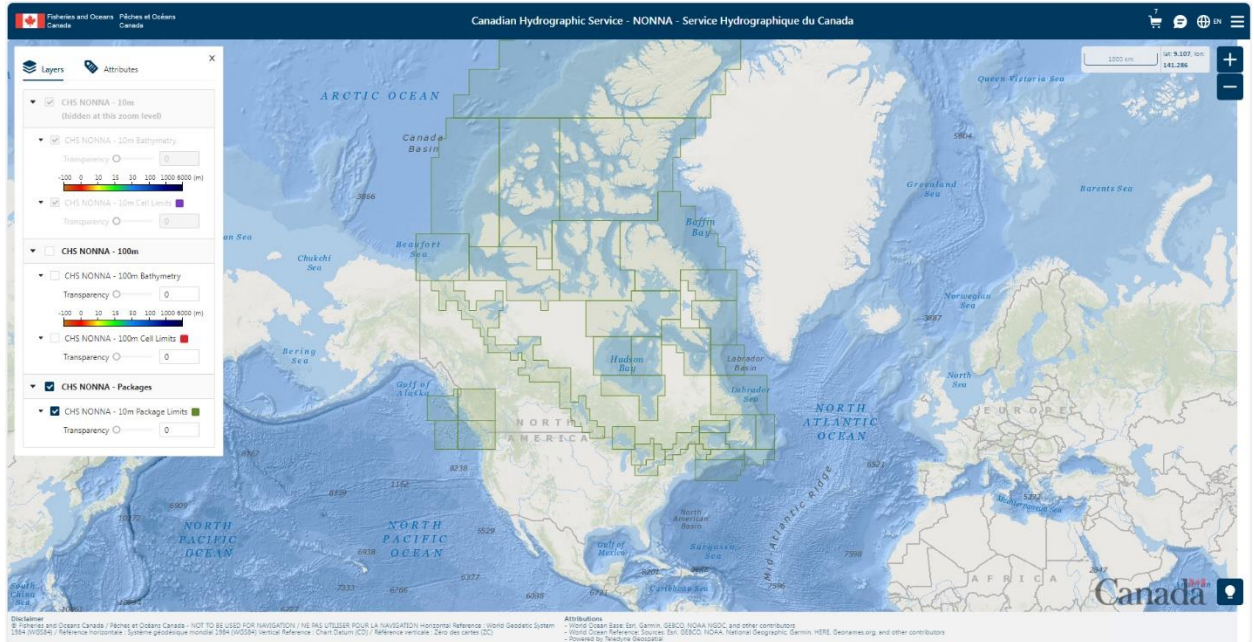
WMS <https://nonna-geoserver.data.chs-shc.ca/geoserver/wms?request=GetCapabilities>

WMTS <https://nonna-geoserver.data.chs-shc.ca/geoserver/gwc/service/wmts?request=GetCapabilities>

WCS <https://nonna-geoserver.data.chs-shc.ca/geoserver/wcs?request=GetCapabilities>

9. How do I access CHS NONNA Packages?

CHS NONNA Packages are the newest product available from the CHS. They were created as a way to ease the download of datasets across a large area. Packages can be downloaded from the CHS NONNA Portal website by:

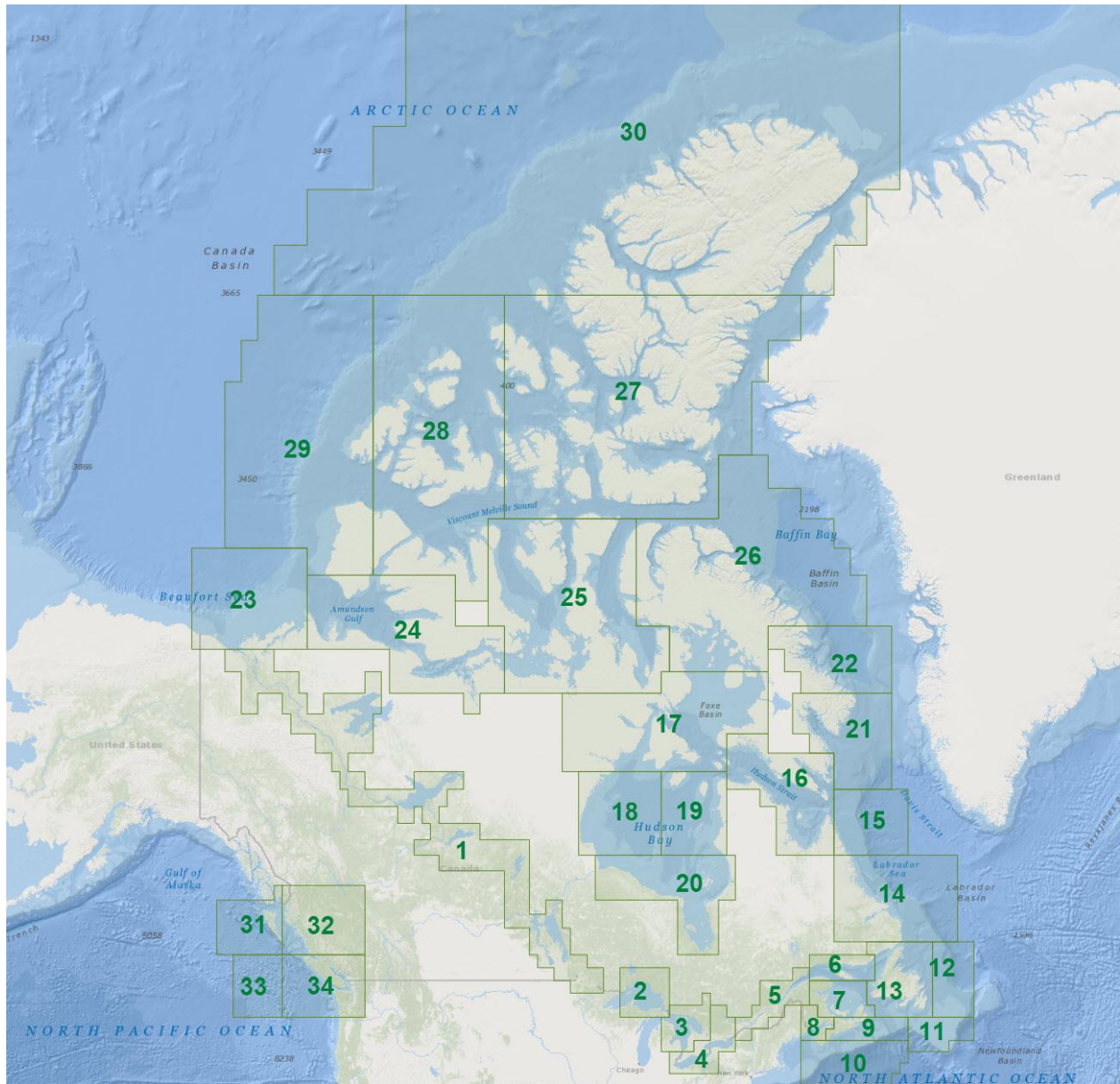
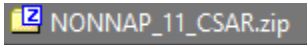


1. Enable the CHS NONNA - Packages checkmark in the Layers window - this will make the Package Cells visible on your screen;
2. Select the Packages you wish to download by left clicking with your mouse and holding “ctrl”;
3. Click **Add to cart** at the top of the attributes window to add selected datasets to the download cart.

10. How do I know which CHS NONNA Packages I have downloaded?

In the downloaded ZIP file name, CHS NONNA packages are numbered.

The corresponding number can be referenced in the graphic below.



For more detailed instructions please see the CHS NONNA Data Portal Guidance Document in the Data and Resources section of [Canadian Hydrographic Service Non-Navigational \(NONNA\) Bathymetric Data - Open Government Portal \(canada.ca\)](https://www.canada.ca/en/canadian-hydrographic-service/services/nonna-bathymetric-data-open-government-portal)

2023-11-07

NOTE: The most modern bathymetry has been uploaded to the NONNA Portal Website, however, there may be some survey data that has not made in it to the CHS NONNA database yet. The CHS only provides data to the CHS NONNA Portal when the data has gone through a number of validation steps and some sources will be in process as updates occur.

If there are unresolvable issues please contact the CHS at chsinfo@dfo-mpo.gc.ca